



Global Sourcing Industries

**PRECISION PARTS FROM INDIA:
Low Cost & Safe Procurement**

A QUICK OVERVIEW



- GSI is committed in the trading of technical metal parts (machined components, castings, forgings)
- We develop the parts from our Indian suppliers and export them to our clients in Europe.
- Our clients place their orders directly to us.
- We have a qualified panel of regular suppliers specialized in various technologies
- We handle the PO from PPAP till production delivery at your plant

A QUICK OVERVIEW



- 2007: Mr. Lalevee, French, establishes in Pune India and develops CNC components for the forklift industry
- 2009: Joining with M. Gavhane Indian for the development of more technical parts like Castings and forgings
- 2011: Opening office at Kolhapur for castings
- 2015: Opening logistic platform in France
- 2018: Start of machining production unit



Global Sourcing Industries

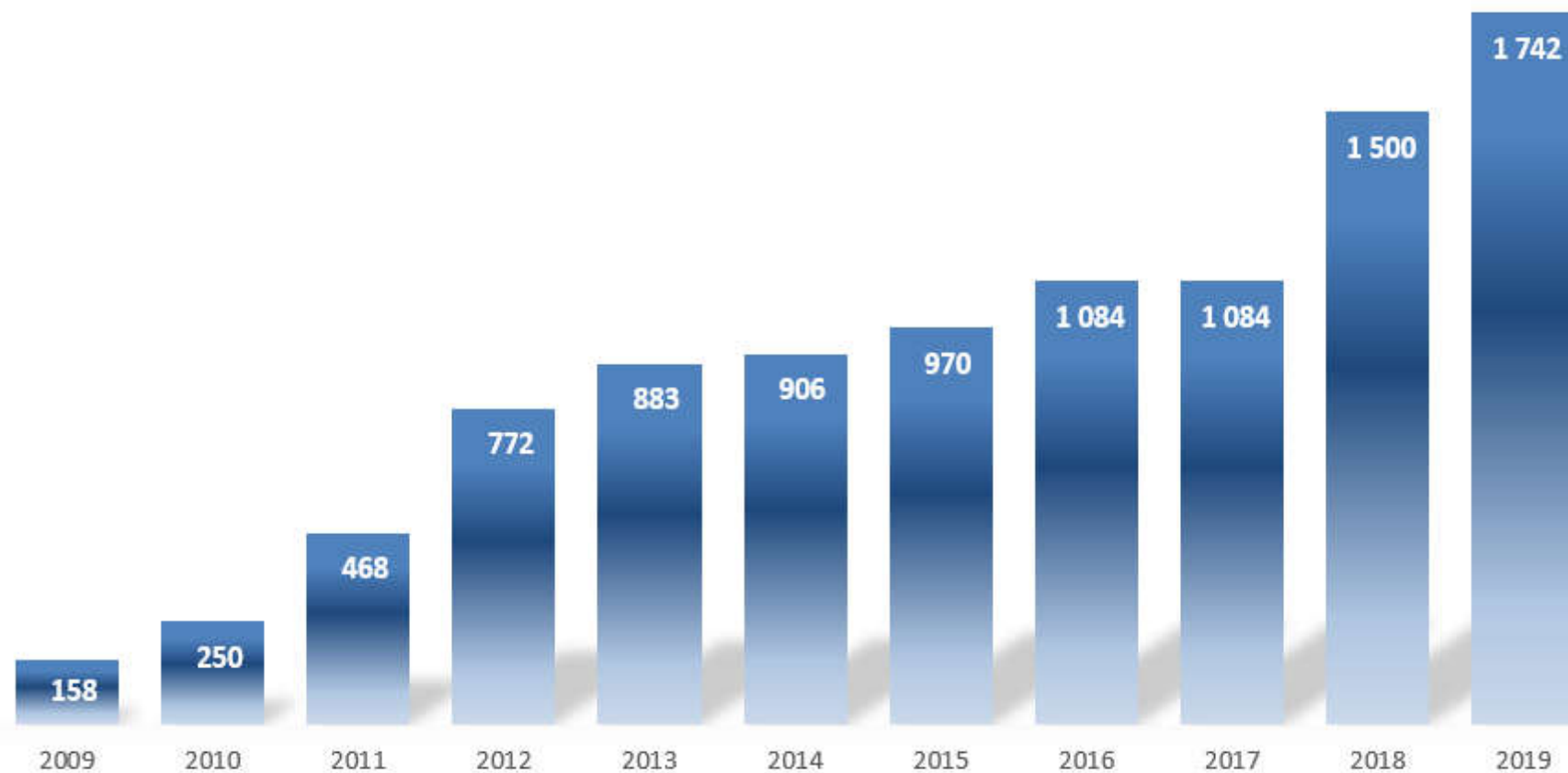
- SAS – Registered in France (68)
- Established in 2007



Engineering Pvt. Ltd.

- Private Limited - India
- Established in 2009

TURNOVER EVOLUTION (K€)



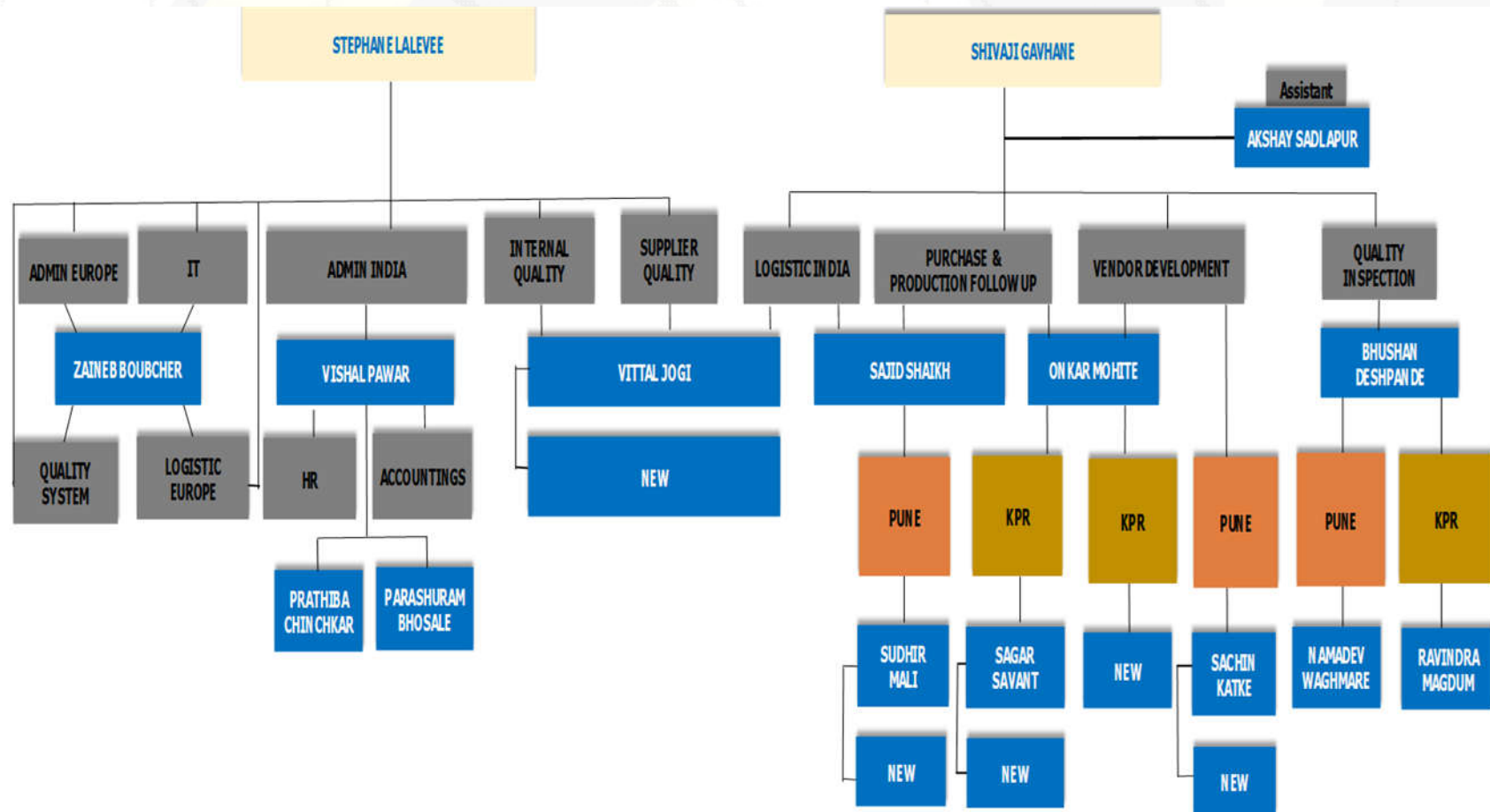
A QUICK OVERVIEW



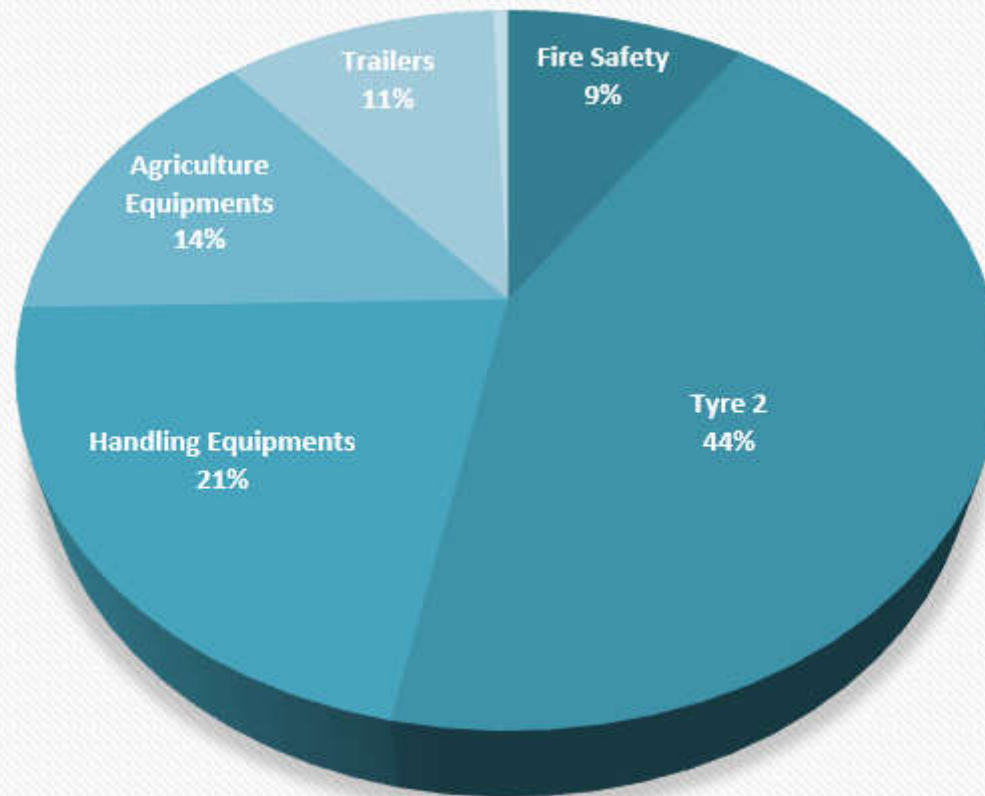
Data

- 18 mechanical/quality engineers
- 25 regular suppliers
- 150 part references
- More than 400 tons material delivered every year
- 15 regular customers spread all over Europe

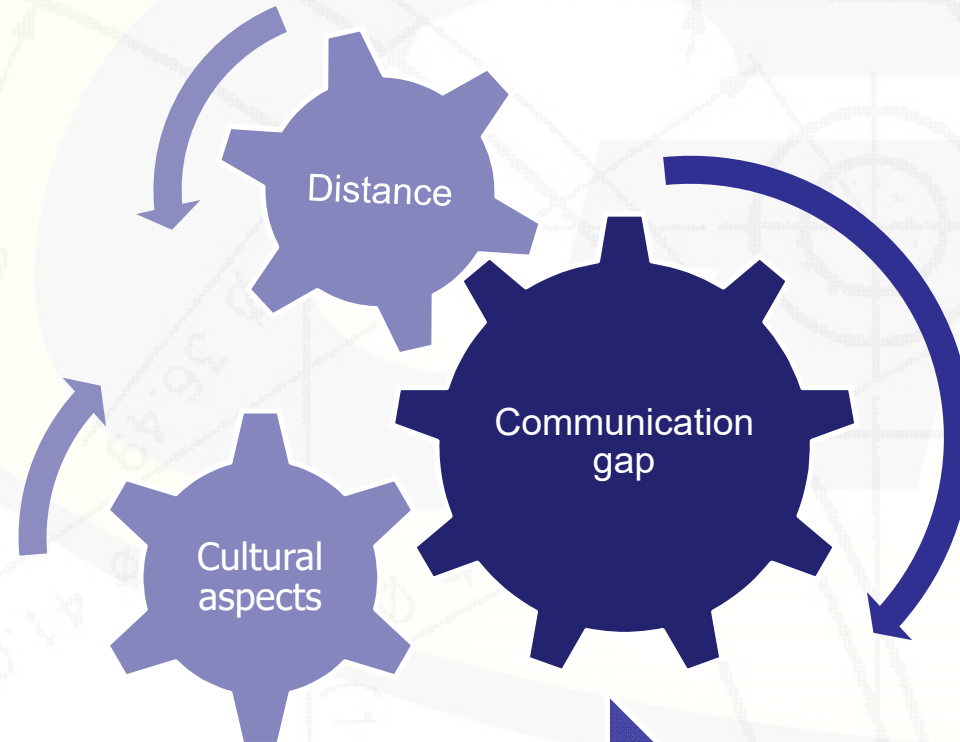
ORGANIGRAM



WHO OUR CUSTOMERS ARE



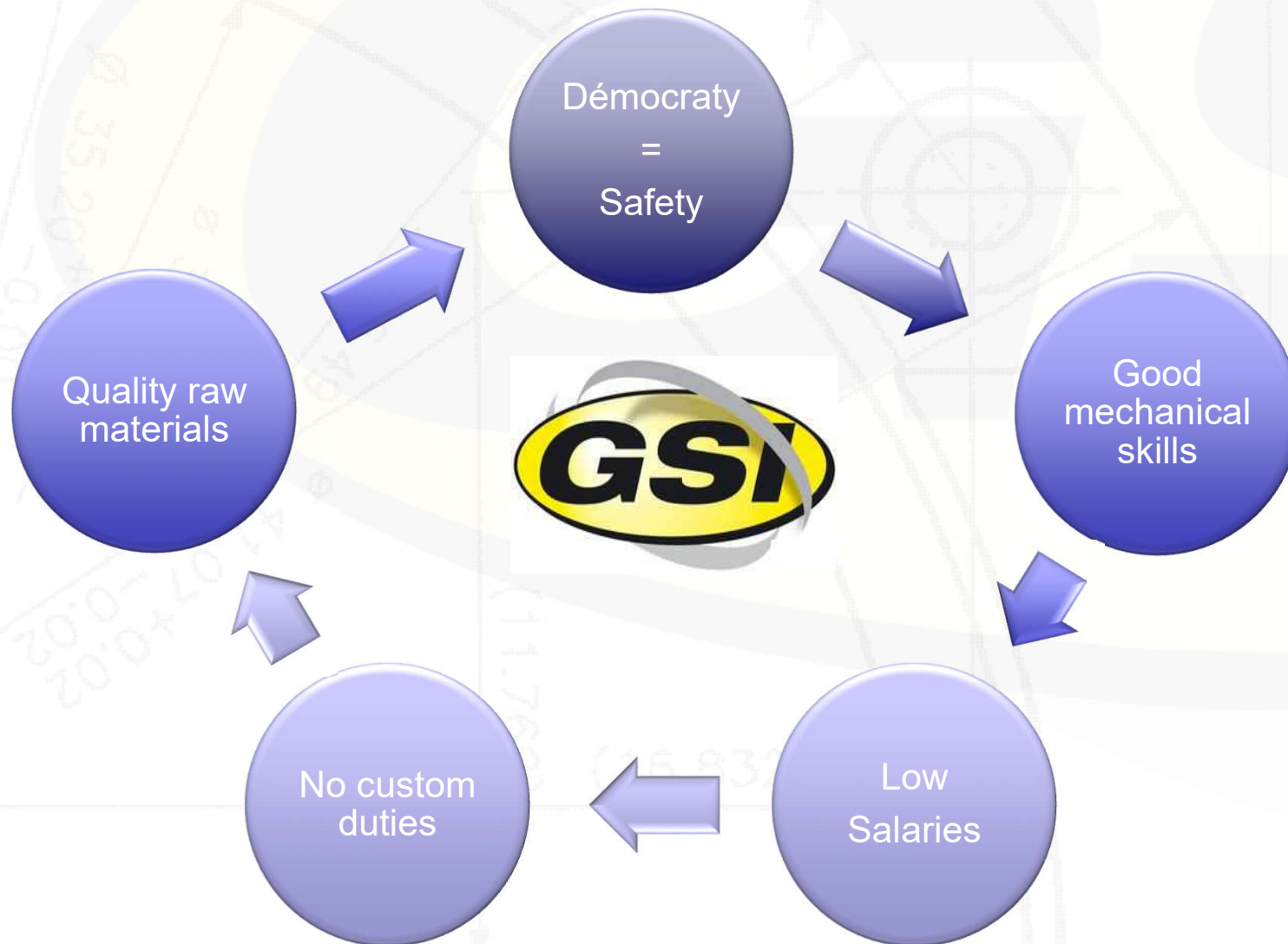
Purchase in Asia: Possible issues



Requirement of a one point contact able to understand European requirements



WHY TO PURCHASE IN INDIA?



WHY PUNE ?



Close to Mumbai port
(150 km)

Many Multinational
Companies settled

PUNE

Hub for Mechanical
Industries

Quality oriented
(Automobile Industries)



WHAT WE PROPOSE YOU

Select the potential components

- High purchasing cost
- High added value

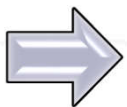
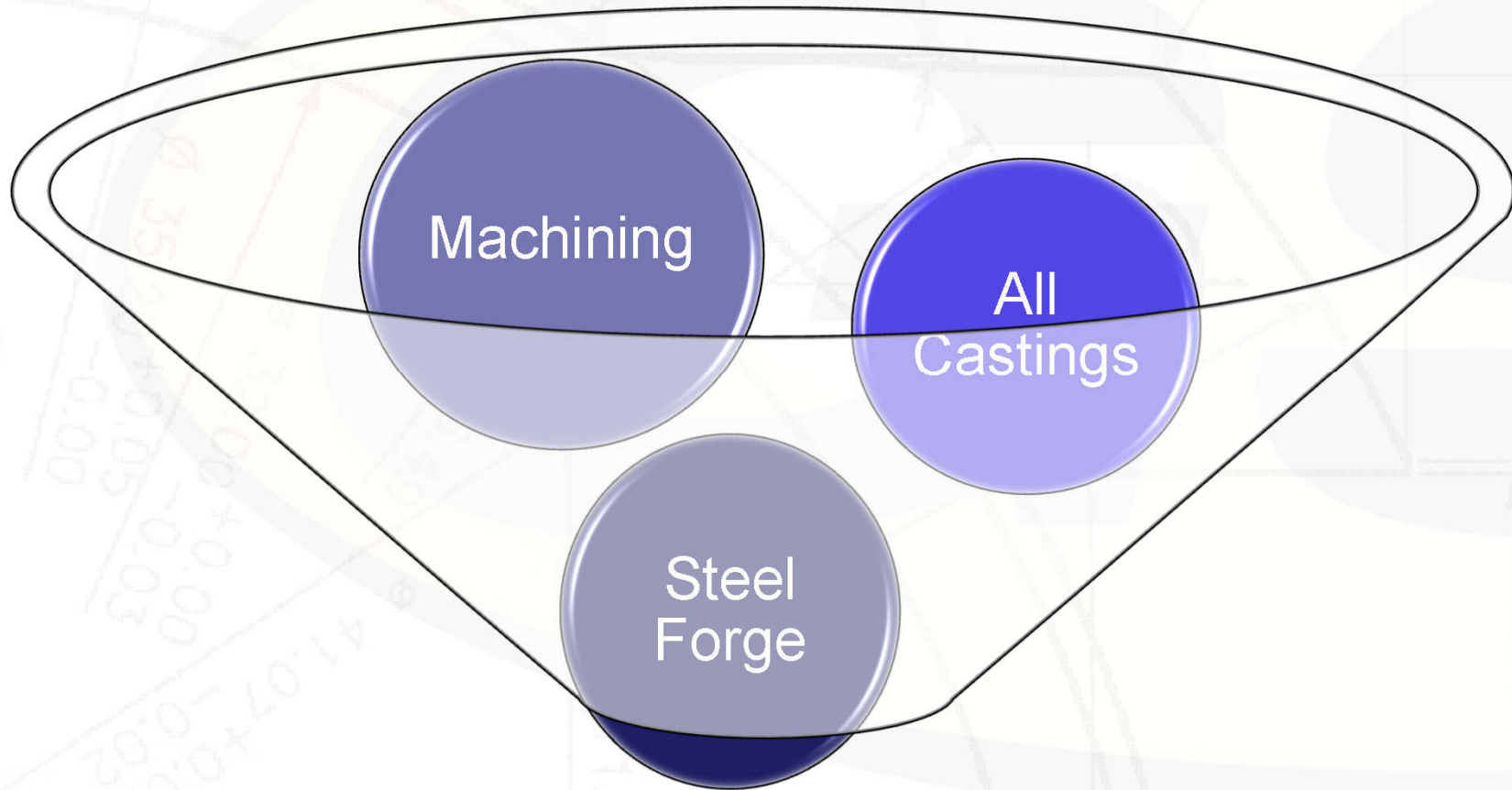
Commercial offer

- 20 to 30% saving
- Global logistic offer

Start in Production:

- Initial samples
- Pilot lot
- Regular production

REDUCE YOUR SUPPLIER PANEL



1 single contact point for all
your mechanical supplies

1st STEP : A STRICT SELECTION OF OUR PARTNERS



- A multi specialist panel of suppliers qualified by GSI



- Selection of the most suitable supplier: skills, spare capacity, price

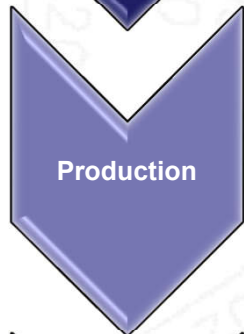


- Joint technical teams for development of the new components

2nd STEP: STRICT MONITORING



- PPAP for any new parts



- Strict monitoring of the production



- European packing standards
- Global player freight forwarders

Machining



- CNC Turning + VMC



- Laser cutting + VMC



- Gear cutting upto class 7

Iron Castings + machining



- FGS 450 + 4 axis machining



- FGL 250 + CNC turning + balancing



- FGS 500-7 + CNC

Steel casting + machining



- G20Mn5 (12 kg) + Q + T + machining





Aluminium Castings + machining



- Pressure Die Casting ADC12 + VMC



- Gravity Casting AS13 + CNC Turning

Steel Forging



- 42CD4 + Quenching + Tempering

- S355J2G3 + CNC turning



- 42CrMo4 + Quenching + Tempering

Assemblies



- Pin assembly by press



- Bush assembly and dynamometric spanner screwing



- Assembly by Loctite

Others



- Welding by robot or manual

- Sintering (metal powder)



- CNC or press bending

Others



- Oxycut + Machining



- Nylon machining



- Stamping + assembly



Surface Treatments



- Liquid Nitriding (Arcor or Nitrotec equivalents)
- Trivalent REACH zinc plating
- Zinc Nickel plating
- Spray painting
- Powder coating
- Aluminium Anodizing
- Cathaphoretic Painting KTL or CED

Heat Treatments



- Quenching + tempering
- Induction hardening



OUR *FOUR COMMITMENTS* FOR A GLOBAL TRUST

1 QUALITY COMMITMENT

Continuous and systematic control

Prevention of quality issues

Updated documentation



2 LOGISTIC COMMITMENT



Fulfillement of the agreed lead times

Global logistic handling (including custom)
untill your door step

Safety stock close to your plant

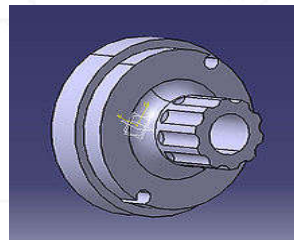


3 TECHNICAL COMMITMENT

Strict accordance with the drawings

Regular technical feed back

Improvment & Innovation proposals





4

COMMERCIAL COMMITMENT

Clear quotations reflecting global cost

Fulfillement of our agreements

Immediate response from your contact

THEY TRUST US



Thank you!





CONTACT

- French Office:
 - Sogequare Aire de la Thur Route de Guebwiller 68840 PULVERSHEIM - France
 - Tel : +33 (0)6 61 25 67 84
 - Fax : + 33(0)3 59 08 76 56
- Indian Office:
 - Evolve IT Building, A-1, S-177, MIDC, Bhosari, Pune – 411026, India
 - Tel: +91(0)20 65 60 60 61
- Warehouse:
 - S47 – MIDC Bhosari – Pune 411 026 – India
 - Tel: +91(0)2020 275 139

contact@sourcingindustries.com

✓ *More details on www.sourcingindustries.com*